



City Council
COMMITTEE OF THE WHOLE
City of Belvidere, Illinois

Alderman Sheryl Prather	Chairman Building
Alderman Natalie Mulhall	Vice-Chairman Building
Alderman Ric Brereton	Chairman Finance and Personnel
Alderman Wendy Frank	Vice -Chairman Finance and Personnel
Alderman Tom Porter	Chairman Planning & Zoning
Alderman Mike McGee	Vice-Chairman Planning & Zoning
Alderman Clayton Stevens	Chairman Public Safety
Alderman Matthew Fleury	Vice-Chairman Public Safety
Alderman Marsha Freeman	Chairman Public Works
Alderman Daniel Snow	Vice-Chairman Public Works

AGENDA

May 24, 2021
6:00 p.m.
City Council Chambers
401 Whitney Blvd., Belvidere, Illinois

Call to Order:

Roll Call:

Public Comment:

Public Forum:

Reports of Officers, Boards, and Special Committees:

1. Finance & Personnel, Unfinished Business: None.
2. Finance & Personnel, New Business:
(A) NIMEC 2021 Electric Aggregation.

3. Public Safety, Unfinished Business: None.

4. Public Safety, New Business:
 - (A) Police Department – Update.
 - (B) Police - Purchase of Night Vision Device for SWAT.
 - (C) Fire Department – Update.
 - (D) Fire - Carryover Shift Time (Gunsteen & Drall).

5. Other:
 - (A) Resale of Water/Mobile Home Parks.
 - (B) Alley Update.
 - (C) In person attendance of Committee & Council Meetings.

6. Adjournment:

Incative Rates: Not for Public Distribution

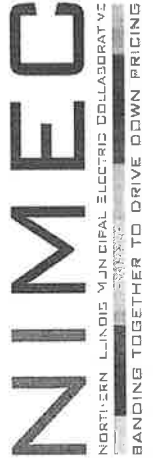
City of Belvidere

May 2021

Green Aggregation with Annual Civic Contribution (1, 2 or 3 years)					
	Green Energy	Eligo Energy			MC Squared
		1 yr*	2 yr	3 yr	
Exactly at ComEd rate, guaranteed	0%	\$116,936	\$79,983	\$47,465	\$120,000
	EPA	\$104,061	\$67,109	\$34,591	\$100,000
	50%	\$99,753	\$62,800	\$30,282	\$60,000
	100%	\$94,802	\$57,850	\$25,331	\$20,000

* available for multi-year terms if 5% drops are permitted

Section 454.90 of the Public Utilities Act (220 ILCS 5/16 – 115C) requires all agents, brokers and consultants to disclose that if one of the above bids is accepted, NIMEC receives compensation from the winning electric supplier.



Proposal:

To renew the City's electric Municipal Aggregation (MA) program. The proposed program would feature a rate for residents that would match exactly the variable Commonwealth Edison rate (that residents are currently paying). The program would also include an annual civic contribution payable to the City.

Background:

Following the passage of a voter Referendum in the March 2012 election, the City managed the inaugural electric aggregation program. The "opt out" electric aggregation program allows the City to go out to bid to negotiate the purchase of the combined electric supply of its residents and small businesses in an effort to secure the most favorable terms for residents' electricity supply.

Regardless of the supplier, ComEd continues to deliver the energy and continues to bill participants in the program. All residents and small business (who have not previously selected their own supplier) are automatically enrolled, unless they choose to opt out (at no cost).

The City's program ran from 2012 to present. During this time, the program featured a fixed rate that was lower than ComEd's. The residents have enjoyed the savings on their home electric bills. Unfortunately, when our energy consultant, NIMEC, recently tested the market, suppliers were not able to offer any rates below those of ComEd's.

However, NIMEC has brought to our attention a new aggregation program, whereby the residents are charged the ComEd rate. There are no savings for residents and our program rate would never be higher than ComEd's. The program rate will match the ComEd rate each month, as the ComEd rate varies month to month.

However, the City would receive an annual Civic Contribution from the supplier. The more aggressive supplier has offered an indicative bid with an annual Civic Contribution of \$120,000 annually. This payment is not restricted in any way; the City can use it for whatever purpose it deems best. (The City has worked with NIMEC since 2003 and has developed a good working relationship over the 17 years.)

How it Works:

- Every residential electric account establishes unique usage consumption patterns. Factors such as volume, time of day, single family vs. multi-family, and usage during ComEd peak periods combine to create a complex power usage profile.
- Based upon each resident's unique usage profile, suppliers price each account individually.
- Suppliers provide power for those accounts that are profitable and keep all other accounts at ComEd.
- 645 Northern Illinois communities have implemented this program, including Oswego, Aurora, Montgomery, Arlington Heights, Buffalo Grove, Elmhurst, Orland Park, Oak Park, Franklin Park and Tinley Park.

When suppliers analyze a community for this Green Community Aggregation program, they calculate the price for each individual account and will switch only those accounts for which the power to serve that account costs less than the ComEd default rate. The remainder of the accounts that are costlier to serve will remain on ComEd supply service. It does not matter to a resident which group they are

in as both groups will be billed by ComEd at the prevailing ComEd rate. The program has no additional costs.

The profitable margin on the favorable (lower cost) accounts enables the supplier to offer the Civic Contribution payments.

Residents may opt out and leave the program at any time for any reason, and will never be charged an early termination fee. Ratepayers who have already contracted with another supplier on their own are not included in the program.

Belvidere Police Department

Shane Woody - Chief of Police


Matthew Wallace - Deputy Chief, Investigations

Patrick Gardner - Deputy Chief, Patrol



615 N. Main Street - Belvidere, IL 61008 - Phone 815-544-9626 - Fax 815-544-9603 - www.ci.belvidere.il.us

TO: Mayor Morris and City Council

FROM: Chief Shane Woody 

DATE: May 24, 2021

RE: Authorization to Purchase Night Vision Device for SWAT

In 2019 the SWAT team was called to handle a suicidal subject armed with a rifle. The standoff lasted for hours, well into the night. Once night fell and SWAT found themselves having to deal with the subject outside with minimal to no ambient lighting they had difficulty navigating the lighting conditions because they didn't have proper night vision equipment for the situation.

The Belvidere Police Department is respectfully requesting authorization to purchase a Night Vision Device \$4,312.00, night vision mount \$519.75, and adapter \$172.25 for SWAT.

Attached you will find literature for your information pertaining to the request before you.

Motion: To authorize the purchase of an EOTech L3 Warrior Systems M914A Night Vision Device with Norotos Night Vision helmet mount and adapter for a total cost of \$5,004.00 using funds budgeted in the Equipment Line Item #01-5-210-8200.



TOTAL = NVG MOUNT ADAPTER
\$ 5,004

Sales Quote

KIESLER POLICE SUPPLY
2802 SABLE MILL RD
JEFFERSONVILLE, IN 47130

Bill-to Customer
BOONE COUNTY SHERIFF
615 NORTH MAIN STREET
BELVIDERE, IL 61008

Ship-to Address
BOONE COUNTY SHERIFF
SGT. CHRIS WASHBURN
615 NORTH MAIN STREET
BELVIDERE, IL 61008

Your Reference
Bill-to Customer No. L69756
Tax Registration No.

No. Q122224
Document Date April 29, 2021
Due Date May 29, 2021
Payment Terms
Payment Method
Tax Identification Type Legal Entity
Shipment Method

Salesperson RONI
Email
Home Page
Phone No.

No.	Description	Quantity	Unit of Measure	Unit Price Excl. Tax	Line Amount Excl. Tax
EOTE245620-037	EOTECH PVS-14 MNVD, M914A FOM WP AHKEEE-DOR	1	EACH	4,312.00	4,312
KIESLER NOTE	SHIPPING INCLUDED	1	EACH	0.00	0
FORMAT RONI	QUOTED BY RONI MONTGOMERY KIESLER POLICE SUPPLY 2802 SABLE MILL ROAD JEFFERSONVILLE, IN 47130 THIS QUOTE IS VALID FOR 30 DAYS RONI@KIESLER.COM	1	EACH	0.00	0
Amount Subject to Sales Tax				0.00	
Amount Exempt from Sales Tax				4,312.00	
Subtotal					4,312.00
Total Tax					0.00
Total \$ Incl. Tax					4,312.00
Tax Amount					0.00

KIESLER POLICE SUPPLY FFL# 4-35-019-11-1M-08220

RETURNED GOODS POLICY

No returned goods will be accepted without prior consent. Any packages returned without properly displaying a return authorization number will be refused. Returns subject to up to 25% restocking fee

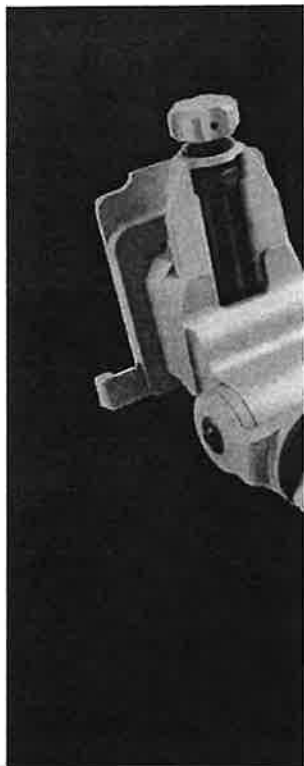
DEFECTIVE MERCHANDISE POLICY

We are not a warranty repair station for any manufacturer. Returns of defective merchandise must be made directly to the manufacturer for repair or replacement.

DAMAGED GOODS POLICY

Claims of shortages or damaged shipments must be made immediately upon receipt of shipment.

Home / Shop / Brands / Norotos / Norotos INVG Mount



NOROTOS INVG MOUNT

Mount Only

☆☆☆☆☆ (be the first to review)

Improved Night Vision Goggle Mount

Recommended Accessories:

Norotos Dual Dovetail Adaptor – [BUY HERE](#)

KAC/RQE JAMR – [BUY HERE](#)

\$519.75



DESCRIPTION

The Norotos Improved Night Vision Goggle Helmet Mount Assembly (INVG-HMA) is a radical new approach to NVG mounts. It is unlike any other mount on the market and presents a huge technological leap forward. The INVG-HMA is a precision machined NVG mount that uses a single tri-lobe rail to interface with the goggle. This design feature benefits the user in several ways. First, it presents a stronger, more stable platform that can better survive impacts without damage. Because the interface module moves on a single rail, there is no chance of binding if the mount takes a hit from one side. Second, the entire rail assembly can rotate 360 degrees. This allows you to quickly switch between right and left eye dominance when using a monocular, without removing the optic from the mount. It also allows you to swivel the NVG up in front of the helmet

SPECS

WEIGHT	6.6 oz.
MATERIALS	Aerospace Grade Aluminum Alloy, Hard Anodized
HEIGHT ADJUST	1.1in Total Vertical Travel
FINITE TILT	18°
TRAVEL	1.4in

or quick storage. The INVG arm uses a Force-To-Overcome mechanism for flip-up storage. This means the user has to manually force the arm up into the stowed position. The benefit of this is that it will better absorb an impact to the unit by collapsing into the stowed position rather than rigidly locking the NVG in place and making it susceptible to damage. It also allows for a gross-motion operation rather than a fine-tune motion to actuate. This can be a bonus to the operator in tactical situations where the NVG's need to be quickly moved out of the way. When in the upright position, the INVG arm stows the goggles within the helmet's footprint, helping to protect them from impact and damage. One thing to note is that the INVG does not make use of an auto-shutoff mechanism. The INVG interface module is a dovetail, so it will readily accept the PVS-15, 18, 21, and 7A/C. It will accept a PVS-14 with the Norotos Dual Dovetail Adapter. Like other Norotos dovetail features, the INVG is cross-compatible with Wilcox Industries dovetail interfaces.

The revolutionary Norotos Improved Night Vision Goggle Helmet Mount Assembly is a giant leap forward in NVG mount technology. When you hold this mount in your hand, you can feel the quality and really gain a respect for the craftsmanship. It is probably the most solid-feeling mount we have seen. The adjustments are tight and precise. When wearing NVG's on your helmet, intuitive design becomes extremely important. Adjustment is very good in theory, but there is a tradeoff in complication. If I cannot decipher how the thing works or end up performing one function when I meant to do something else because controls are placed too close together, I am not happy. That said, the control points on the INVG-HMA, like other Norotos mounts, are very intuitive and ergonomic. The vertical adjustment is particularly impressive and precise. The knob is centrally located and easy to find and actuate with gloves. The fore/aft adjustment paddle is sturdy and positively locks in place in 0.1" increments on machined metal. The INVG has a swap-able back plate that allows the mount be adapted to mate with most Helmet Shrouds in use today. Norotos manufactures several different back plates that interface with the most common NVG Helmet Shrouds. These plates are replaceable with a screwdriver and allow you to attach the INVG to a standard USGI Helmet Plate or the Norotos Proprietary foot print. The INVG-HMA mates up very securely to a shroud with no detectable wobble. On top of all that, it is available in oxidized black or fashionable tan.

Norotos has a long history of developing and manufacturing cutting edge specialty mounts for the DOD.

	Fore/Aft
AUTO ON/OFF	No
WARRANTY	1 Year Warranty
SHROUDS	Norotos Universal Shroud, OpsCore VAS Shroud, USGI MICH Plate, USGI PASGT Plate, Wilcox L4 Single Hole Shroud
ACCOMMODATES	AN/PVS- 7A, AN/PVS- 7C, AN/PVS- 15, AN/PVS- 18, AN/PVS- 21, AN/PVS- 14 (w/ Norotos Dual Dovetail Adapter)
MANUFACTURER	Norotos

They have lately been getting more attention in the commercial market and demand for their products has been increasing. We met one of their engineers at SHOT Show and were immediately impressed with what he had to show us. Their design, engineering, and manufacturing are second to none and we are very excited to offer their products.

Export of Norotos products is controlled by the U.S. Department of Commerce under Export Administration Regulations (EAR) and the U.S. Department of State, Directorate of Defense Trade Controls Bureau of Political-Military Affairs, in accordance with 22 U.S.C. 2778-2780 of the Arms Export Control Act (AECA) and the International Traffic in Arms Regulations (ITAR). (22 CFR Parts 120-130) regulate Wilcox products.

It is unlawful to export, or attempt to export or otherwise transfer or sell any hardware or technical data or furnish any service to any foreign person, whether abroad or within the United States, for which a license or written approval of the U.S. Government is required, without first obtaining the required license or written approval from the Department of the U.S. Government having jurisdiction.

1 REVIEW FOR NOROTOS INVG MOUNT

FRIDAY NIGHT LIGHTS: Night Observation Devices, Mount Up! – Various NOD Mount Review – Concealed Carry News

August 22, 2019

[...] tube bino NODs. If you want an INVG then get ready to shell out some serious dough. They sell for \$519.75 on TNVC. If you are lucky enough to find one used then get it. But they are highly sought after and are not [...]

Only logged in customers who have purchased this product may leave a review.

ome / Shop / Brands / Norotos / Norotos Dual Dovetail Adapter PVS-14 THA



NOROTOS DUAL DOVETAILED ADAPTER PVS-14 THA

Adaptors & Arms

sssss (be the first to review)

Dual Dovetail Interface Arm for PVS-14 w True Horizontal Adjustment

\$172.25
IN STOCK



DESCRIPTION

The Norotos Dual Dovetail Mount is one of the most revolutionary mounts for the PVS-14. It takes the additional J-Arm Mount System and, literally, turns it on its head. The Dual Dovetail offers complete versatility, stability, and security for your PVS-14 NVG. The device attaches to the optic via the threaded insert in the optic's body housing. Instead of cantilevering around the PVS-14, the Dual Dovetail Mount protrudes straight out from the housing and presents a dovetail-style interface to the helmet mount. The adapter creates a much more stable platform for mounting the PVS-14 because there is significantly less material between the optic and the mount (however, the cross section of the Dual Dovetail Adapter is much wider than the legacy J-Arm, insuring much more stability). Because the adapter extends straight from the

SPECS

MANUFACTURER Norotos

When the PVS-14 is rotated slightly from its normal position.

The Dual Dovetail Adapter allows the PVS-14 to be mounted in a standard dovetail interface (the same used on the PVS-15, 18, and 21). It features two separate, movable dovetail shoes, allowing you to configure it for left or right eye dominance. Another option is to leave both dovetails attached so the PVS-14 can be switched from right to left eye on the fly. This is a very innovative system. The beauty is in the simplicity of the design and extreme functionality. It features a state-of-the-art automatic shut-off system, and is much more water resistant than the legacy J-Arm.

Norotos has a long history of developing and manufacturing cutting edge specialty mounts for the DOD. They have lately been getting more attention in the commercial market and demand for their products has been increasing. We met one of their engineers at SHOT Show and were immediately impressed with what he had to show us. Their design, engineering, and manufacturing are second to none and we are very excited to offer their products.

Export of Norotos products is controlled by the U.S. Department of Commerce under Export Administration Regulations (EAR) and the U.S. Department of State, Directorate of Defense Trade Controls Bureau of Political-Military Affairs, in accordance with 22 U.S.C. 2778-2780 of the Arms Export Control Act (AECA) and the International Traffic in Arms Regulations (ITAR). (22 CFR Parts 120-130) regulate Wilcox products.

It is unlawful to export, or attempt to export or otherwise transfer or sell any hardware or technical data or furnish any service to any foreign person, whether abroad or within the United States, for which a license or written approval of the U.S. Government is required, without first obtaining the required license or written approval from the Department of the U.S. Government having jurisdiction.

❑ REVIEWS

There are no reviews yet.

Only logged in customers who have purchased this product may leave a review.

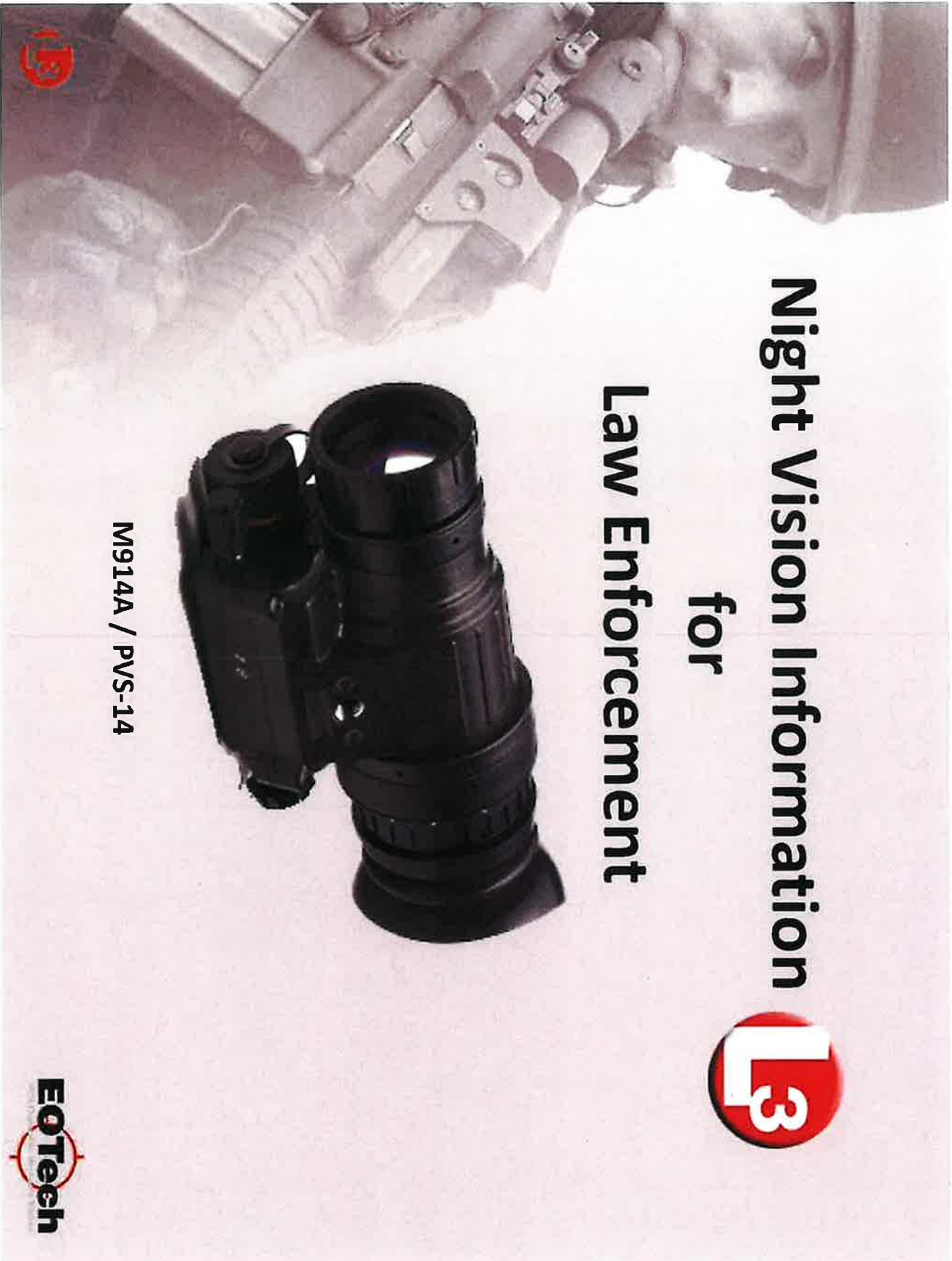
Night Vision Information for



Law Enforcement



M914A / PVS-14



HOW NIGHT VISION WORKS

Night vision is often referred to as I2 or (I1) = Image Intensification

Available light is gathered by the objective lens and enters the surface of the image intensifier or tube. This surface is known as the Photocathode. The material used in this photocathode is a distinguishing characteristic of the different NV generations

Electrons are released from the cathode and excited by an electric current which accelerates their energy. They pass through holes in an MCP, Microchannel Plate a metal coated glass disk that further multiplies the electrons into a dense cloud which is the intensified version of the original image

Electrons pass through a phosphor screen and their energy makes the phosphor glow, providing the image to the user





Why **WHITE** is better than **Green**?

How your **BRAIN** works with **Night Vision**.....

White phosphor night vision is easier for your brain to process because it only has 1 thing to process, the image

Green phosphor night vision more difficult for your brain to process because it has 2 things to process, the image & the color

How your **EYES** works with **Night Vision**.....

White phosphor night vision is easier for your eyes to process because it uses **BOTH** the cones **AND** rods in your eyes (which in turn uses less of your brain).

Green phosphor night vision more difficult for your eyes to process because it uses **ONLY** cones, which means you are relying on less of you vision and more of your brain.



NIGHT VISION GENERATIONS & COLOR

GEN 0

GEN I

GEN II

GEN III



Un-filmed GEN III



GEN III White Phosphor





Quantity selector: 1

ADD TO CART

ADD TO WISH LIST

DESCRIPTION

This product has rules and regulations around export. By adding this item to your cart, you agree that you have read the ITAR link below and understand the regulations around the international exportation of certain products. Please read the ITAR regulations here. For more details, call sales at (303) 255-9999.

Feedback

The M914A™ monocular is based upon the military nomenclature AN/PVS-14. This monocular is available with improved white phosphor tube technology for greater target detection and recognition. Lowlight and nighttime maneuvers appear more natural in black and white, with added contrast detail in shapes and shadows, providing the operator more visual information for assessment and acquisition. White phosphor offers various shades of intensity between black and white (over black and green), resulting in better contrast and depth perception.

Gen III Night Vision Image Intensifier Tube

White Phosphor

Autogated

Min. FOM: 2376

FEATURES

- One of the most versatile night vision systems available
- Offers capabilities of a handheld pocket scope, a right- or left-eye-mounted monocular and a weapon sight when mounted in conjunction with an infrared laser aiming device or other night vision compatible primary



-
- Autogated power supply for improved resolution under highlighted settings

BENEFITS

- Hands-free or one-hand operation
- High-light cut-off tube protection
- Mounts available for head, helmet or weapon interfaces
- Compact, lightweight and multi-purpose uses
- U.S. manufactured image intensifier (I2) tube

STANDARD EQUIPMENT

- Monocular
- Operation manual
- Soft carry case
- Battery
- Demist shield
- Eyeguard
- Sacrificial window
- Lens paper
- Shoulder strap
- Retainer cord
- Head-mount



-
- Battery Life: ~ 48 hrs. at 25 °C (77 °F)
 - Magnification: 1x ($\pm 3\%$)
 - Field-Of-View: 40.0° ($\pm 2^\circ$)
 - Objective Lens: 27 mm (1.1 in. (± 0.5 mm))
 - Minimum Focus Distance: 9.8 in.
 - Eye Relief: 25 mm (1 in.)
 - Diopter Adjustment: +2 to -6
 - Water Resistant: 1 m for 30 minutes



Controlled under the U.S. International Traffic in Arms Regulations (ITAR), USML Category I (f); may not be exported to a foreign person, either in the U.S. or abroad, without a license or exemption from the U.S. Department of State.

***MileHighShooting.com online pricing & sales for U.S. customers only.**

Quick and easy financing for guns and optics over \$2000. [Click here to apply!](#)



**BELVIDERE
FIRE
DEPARTMENT**

123 S. State St.
Belvidere, IL 61008

Fire Chief and Administration Offices
(815)544-2242
Fax (815)544-2278

Memo...

From:	Chief Hyser	Today's Date:	May 18, 2021
To:	Sarah Turnipseed	Effective Date:	May 24, 2020
Subject:	Agenda Items for Committee of the Whole – May 24, 2020		

Carry over shift time:

The following Fire Department members will have to carryover shift days into the new fiscal year due to reasons beyond their control.

<u>Name</u>	<u>Carryover</u>	<u>Reason</u>
Robert Gunsteen	4 Shifts (96 hours)	Gunsteen started on 8/24/20. During that time, he passed 6 holidays and earned 6 shifts but was only able to use 2 in fiscal 2021. As with all new FF candidates he could not schedule them in his first year therefore there was not enough available shift days to choose from.
Dan Drall	1 shift (24 hours)	Drall scheduled his last vacation shift for the end of April, but due to his promotion and change of shifts he was unable to use it.

Respectfully,

Chief At Hyser

Memo

To: Mayor and City Council
From: Mike Drella
cc:
Date: April 29, 2021
Re: Resale of water / Mobile Home Parks

The owner of Four Seasons Mobile Home Park desires to start billing each of the residential units for the water used instead of including it in base rent. Greenview Estates did this some time ago. Our code does allow a mobile home park to rebill its residents for water used but only at the City's rate with no mark-up.

Four Seasons wishes to re-bill its residents by dividing the water bill for the entire park (less a small portion allocated to the common areas) by the number of units in the park. This effectively creates an average bill paid by each residential unit.

I have rendered the opinion that the City's code currently requires a mobile home park desiring to re-bill the cost of water to install a water meter on each residential unit. This ensures that each unit is only paying for water they actually use at the City's rate. Utilizing Four Season's approach would mean that some residential units would end up paying more and some less than the City's rate.

This opinion is supported by sections 114-155 and 114-234 of the City's Code. However, there appears to be an error in section 114-155 that dates back to 1982 and section 114-234 could more clearly require the installation of a meter to meet the obvious intent of that section.

As such, I recommend amending those sections as set forth in the draft code sections attached as Exhibit A. The words stricken out would be deleted and the words underlined would be added to the City Code.

RECOMMENDED MOTION: Motion to amend sections 114-155 and 114-234 to read as set forth in the attached exhibit A.

This will return to City Council in ordinance form.

Sec. 114-155. Resale of water.

Except as provided for bulk sales of water in sections 114-232 and 114-233 ~~section 114-235~~, no water shall be resold or distributed by the recipient thereof from the city supply to any premises other than that for which application has been made and the meter installed.

Sec. 114-234. Mobile home park bulk purchases.

The rate for users inside the city limits is established as the water service rate to be charged to a mobile home park purchasing water in bulk from the city, whether current or future purchases. All mobile home parks purchasing city water must have installed adequate backflow prevention devices prior to purchasing any city water. The mobile home park may rebill its tenants only for the cost of the water at the rate charged by the city. A mobile home park rebilling its tenants for water shall install a meter for each such residential unit.

Memo

To: Mayor and City Council
From: Brent Anderson, Director of Public Works
Date: 5/18/2021
Re: Alley Update

Attached to this memo are maps of the unimproved or partially improved alleys located throughout the city. Each map shows the location, current condition and recommended actions.

Recommended actions include surface improvements to the following alleys:

NW4: Alley located north of Roosevelt Street, between Dalbigne and Berylan – extend alley 20 LF with an estimated material cost of \$480.00.

NW9: Alley located east of Menomomie Street, between Boone and Menomomie – extend alley 132 LF with an estimated material cost of \$3,168.00.

SE8: Alley located from 8th Street to 9th Street, between State and Whitney – extend alley 330 LF with an estimated material cost of \$7,920.00.

The cost for these improvements would be paid for from Public Benefit Funds.

The recommended action on the majority of these alleys is to vacate the undeveloped portions. Vacating city owned property must be done by ordinance. Before passage of such an ordinance, a public hearing must be held and the notice of public hearing must be published at least fifteen (15) days prior to the hearing. If the vacation is approved, the property would be divided equally among the adjoining property owners.

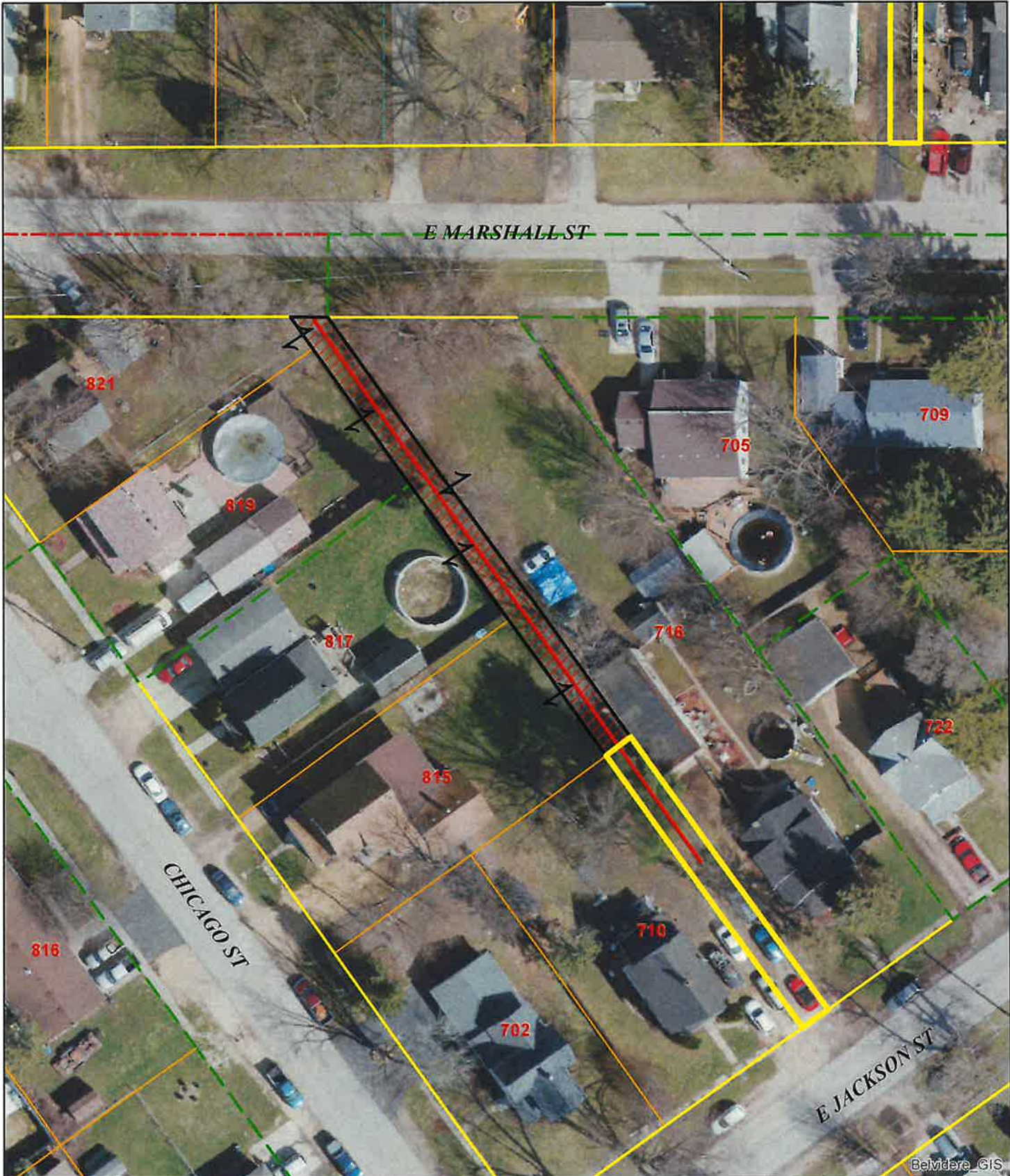


NE1

Length: 137
 Width: 12
 Alley Type: Grass No Improvement
 Recommended Action: Vacate

- Legend**
- Remain ROW
 - Vacate
 - Non Improved Alley





NE₂

Length: 261
 Width: 0
 Alley Type: Partially Improved

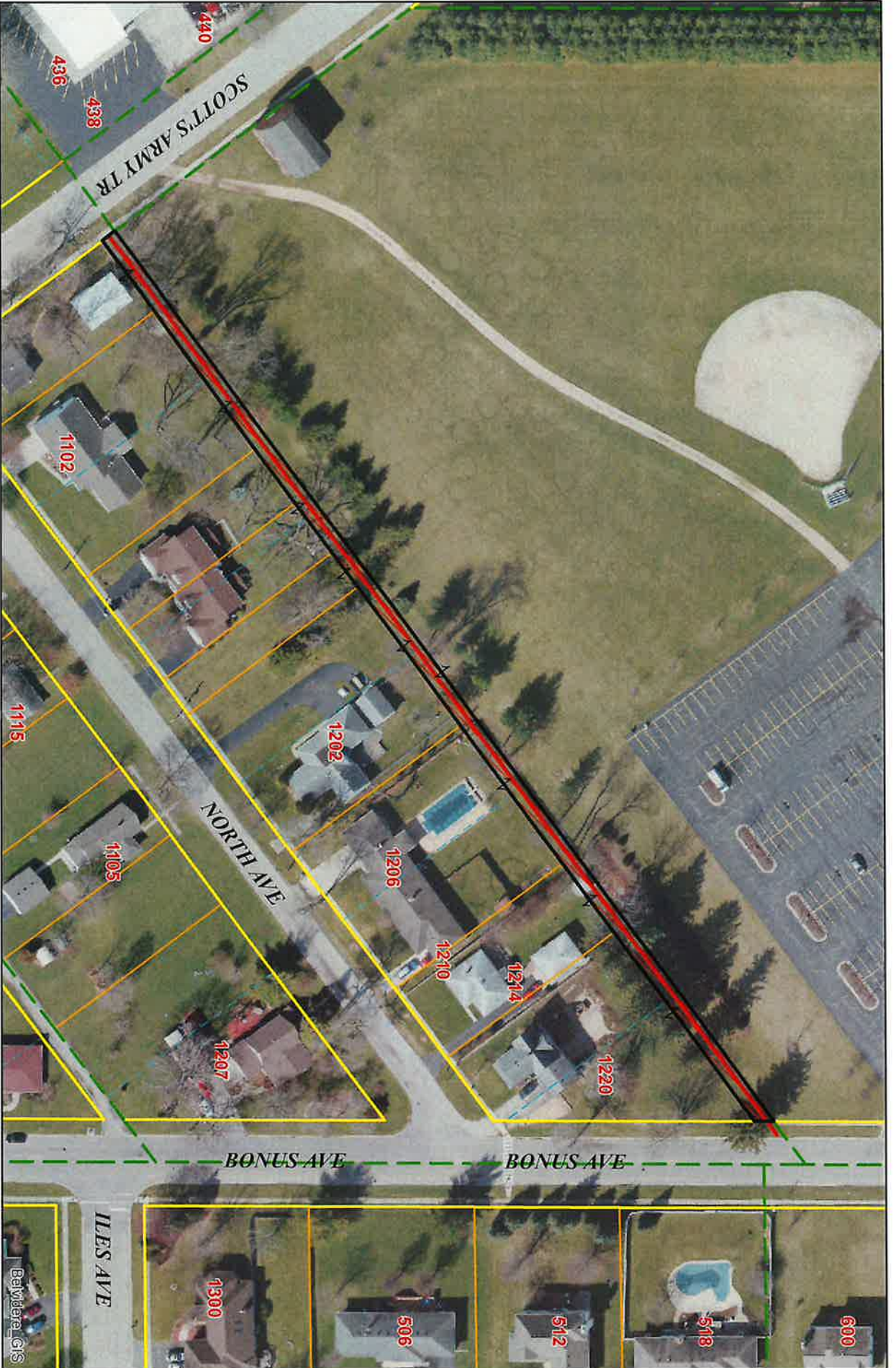
Recommended Action: Contact Property Owners

Legend

-  Remain ROW
-  Vacate
-  Non Improved Alley



Belvidere GIS



NE3

Length: 852

Width: 12


Alley Type: Grass No Improvement

Recommended Action: Vacate

Legend

 Remain ROW

 Vacate

 Non Improved Alley



1 inch = 100 feet

BeWelder GIS



NE4

Length: 195
 Width: 6
 Alley Type: Grass No Improvement
 Recommended Action: Vacate

- Legend**
- Remain ROW
 - Vacate
 - Non Improved Alley



1 inch = 50 feet

Belvedere_GIS



Belvidere, CT

NE6

Length: 77

Width: 12

Alley Type: Partially Improved

Recommended Action: Keep as is

Legend

 Remain ROW

 Vacate

 Non Improved Alley



1 inch = 50 feet



NE8

Length: 388

Width: 12

Alley Type: Grass No Improvement

Recommended Action: Vacate

Legend

-  Remain ROW
-  Vacate
-  Non Improved Alley



1 Inch = 83.33 feet

Baydara GIS



NE9

Length: 152
 Width: 0
 Alley Type: Partially Improved
 Recommended Action: Vacate N 132', Contact Property Owners

- Legend**
- Remain ROW
 - Vacate
 - Non Improved Alley



1 inch = 58.33 feet

Bentley GIS



NWI

Length: 165
 Width: 14
 Alley Type: Partially Improved
 Recommended Action: Vacate W 94'

Legend

-  Remain ROW
-  Vacate
-  Non Improved Alley



1 inch = 83.33 feet



NW 2

Length: 104

Width: 14

Alley Type: Partially Improved

Recommended Action: Vacate NW 53.2'

Legend

Remain ROW

Vacate

Non Improved Alley



1 inch = 50 feet

Beitberg GIS



NW 3

Length: 173
 Width: 12
 Alley Type: Partially Improved
 Recommended Action: Vacate NW 159.65'

- Legend**
- Remain ROW
 - Vacate
 - Non Improved Alley



1 inch = 83.33 feet

Belvidere GIS



NW 4

Length: 68
 Width: 12
 Alley Type: Partially Improved

Recommended Action: Extend Alley 20', Est. \$480.00 (\$165 for Asphalt)

Legend

-  Remain ROW
-  Vacate
-  Non Improved Alley



1 inch = 50 feet

Bentley GIS



NW8

Length: 250

Width: 12

Alley Type: Grass No Improvement

Recommended Action: No change at this time

Legend

 Remain ROW

 Vacate

 Non Improved Alley



1 inch = 41.67 feet

Bentley GIS



Legend

- Remain ROW
- Vacate
- Non Improved Alley



1 inch = 50 feet

Length: 275
 Width: 33
 Alley Type: Partially Improved

Recommended Action: Extend Alley Improvements 132' - Est. \$3,168.00 (\$1,091 for Asphalt Surface)

NW9

Baird & Associates



Belvidere_GIS

SE1

Length: 162
 Width: 14.5
 Alley Type: Grass No Improvement
 Recommended Action: Vacate S 66'

Legend

-  Remain ROW
-  Vacate
-  Non Improved Alley



1 inch = 50 feet



SE2

Length: 137

Width: 13.5

Alley Type: Grass No Improvement

Recommended Action: No changes at this time

Legend

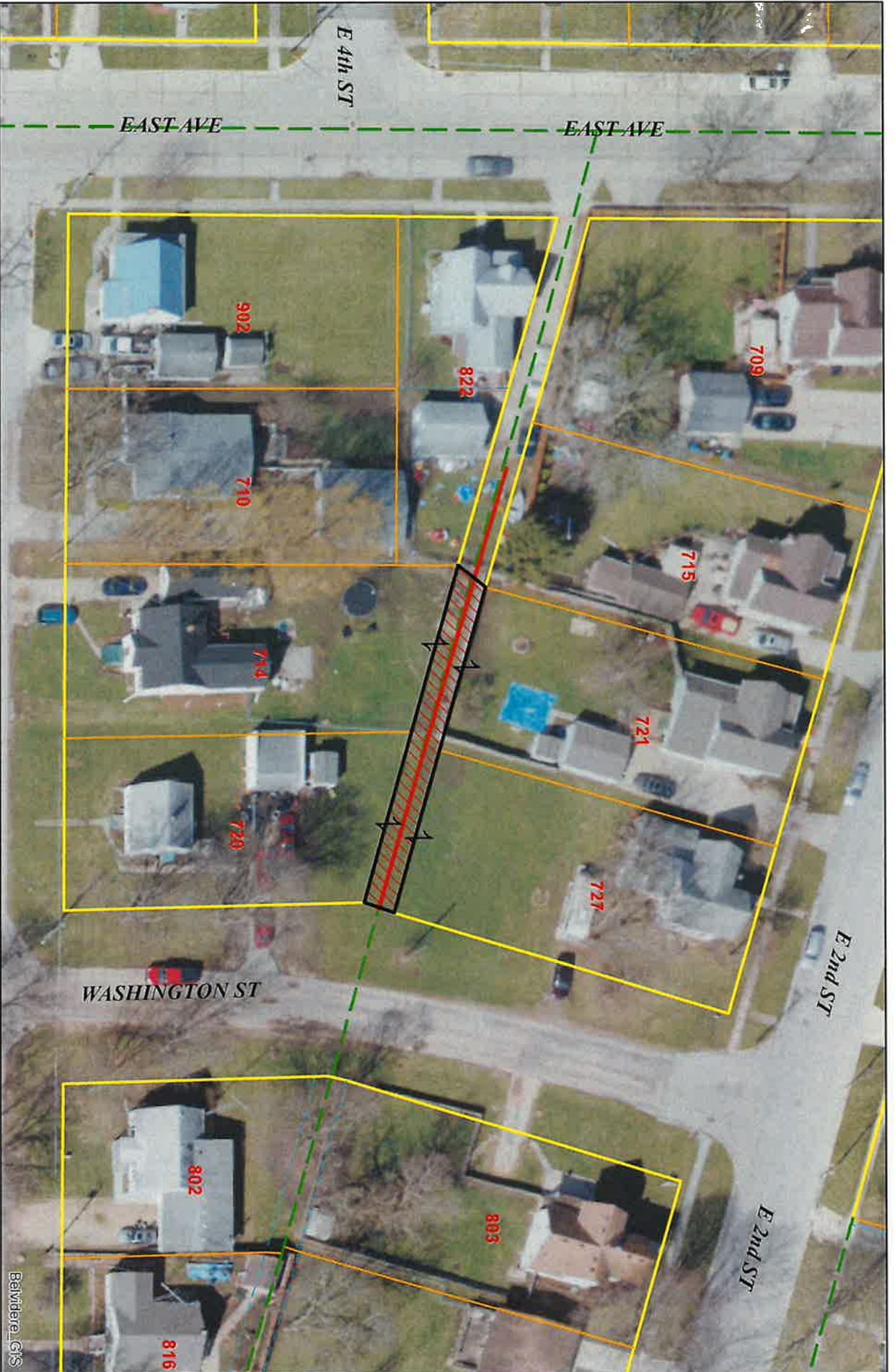
Remain ROW

Vacate

Non Improved Alley



1 inch = 50 feet



SE4

Length: 174
 Width: 12
 Alley Type: Partially Improved

Recommended Action: Vacate E 132', Contact Property Owners

- Legend**
- Remain ROW
 - Vacate
 - Non Improved Alley



1 inch = 50 feet



SE5

Length: 194

Width: 12


Alley Type: Partially Improved

Recommended Action: Vacate E 132', Contact Property Owners

Legend

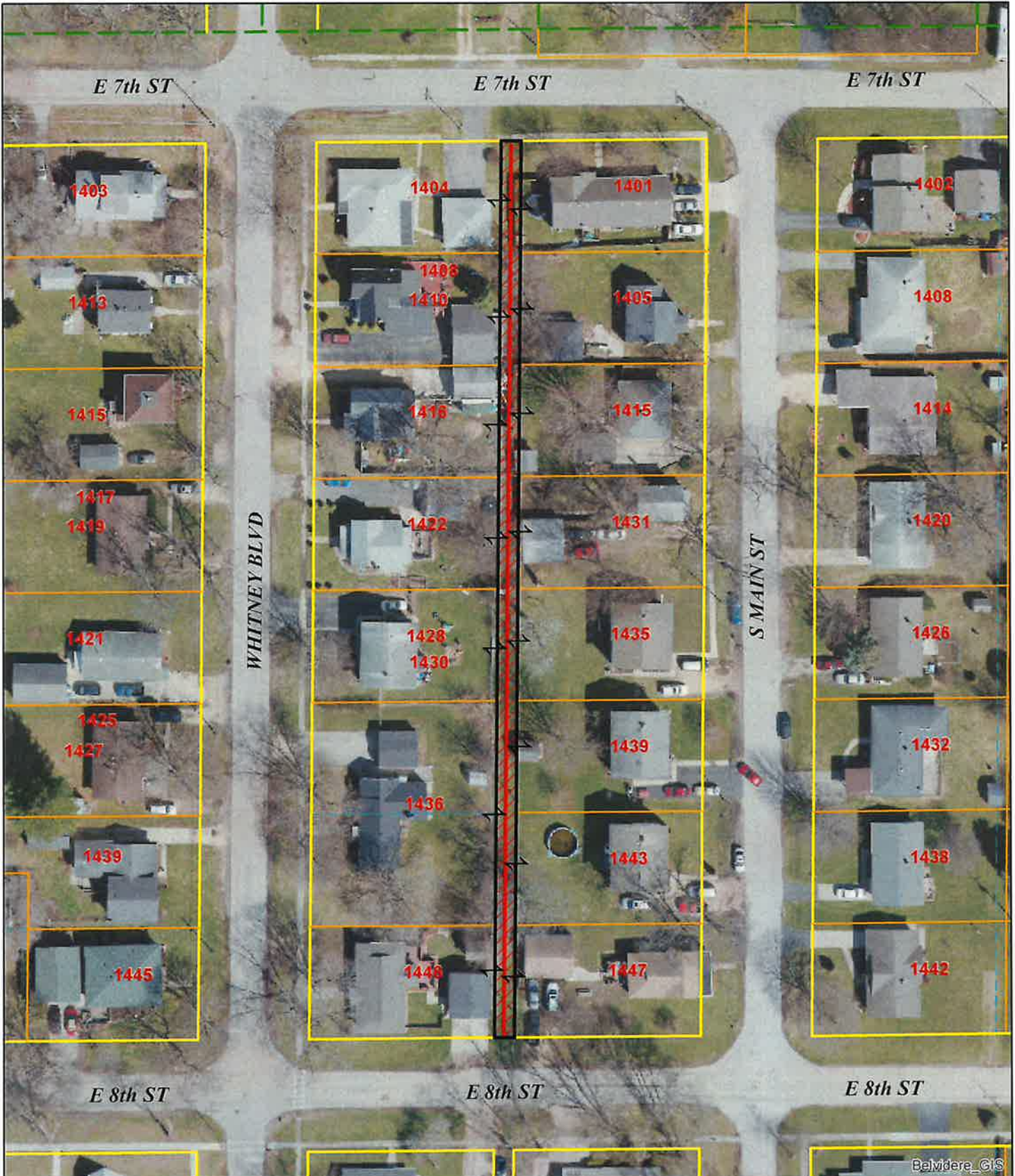
 Remain ROW

 Vacate

 Non Improved Alley



1 inch = 50 feet



Belvidere_GIS

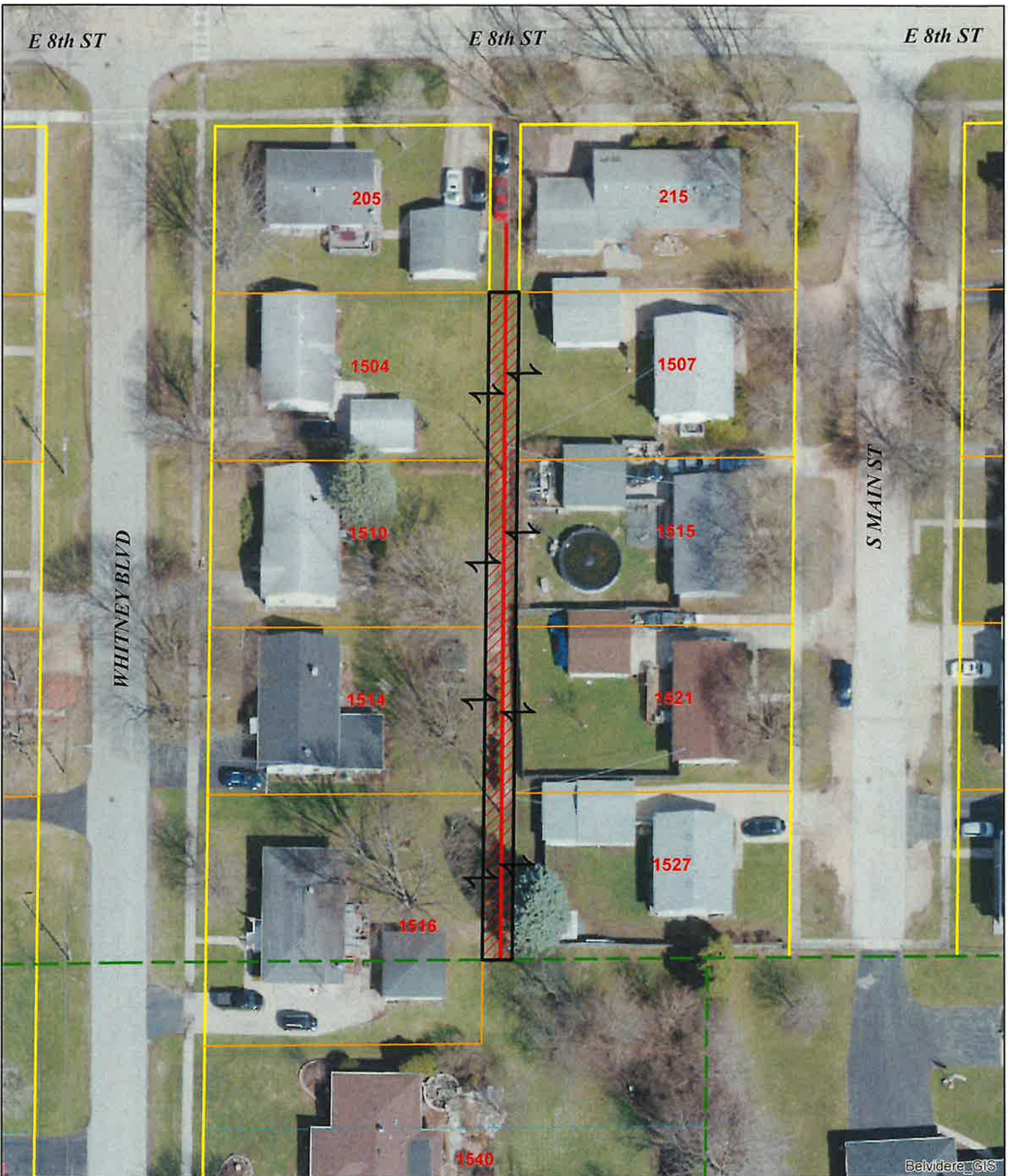
SE6

Length: 526
 Width: 12
 Alley Type: Grass No Improvement
 Recommended Action: Vacate

Legend

- Remain ROW
- Vacate
- Non Improved Alley





SE7

Length: 289
 Width: 12
 Alley Type: Partially Improved

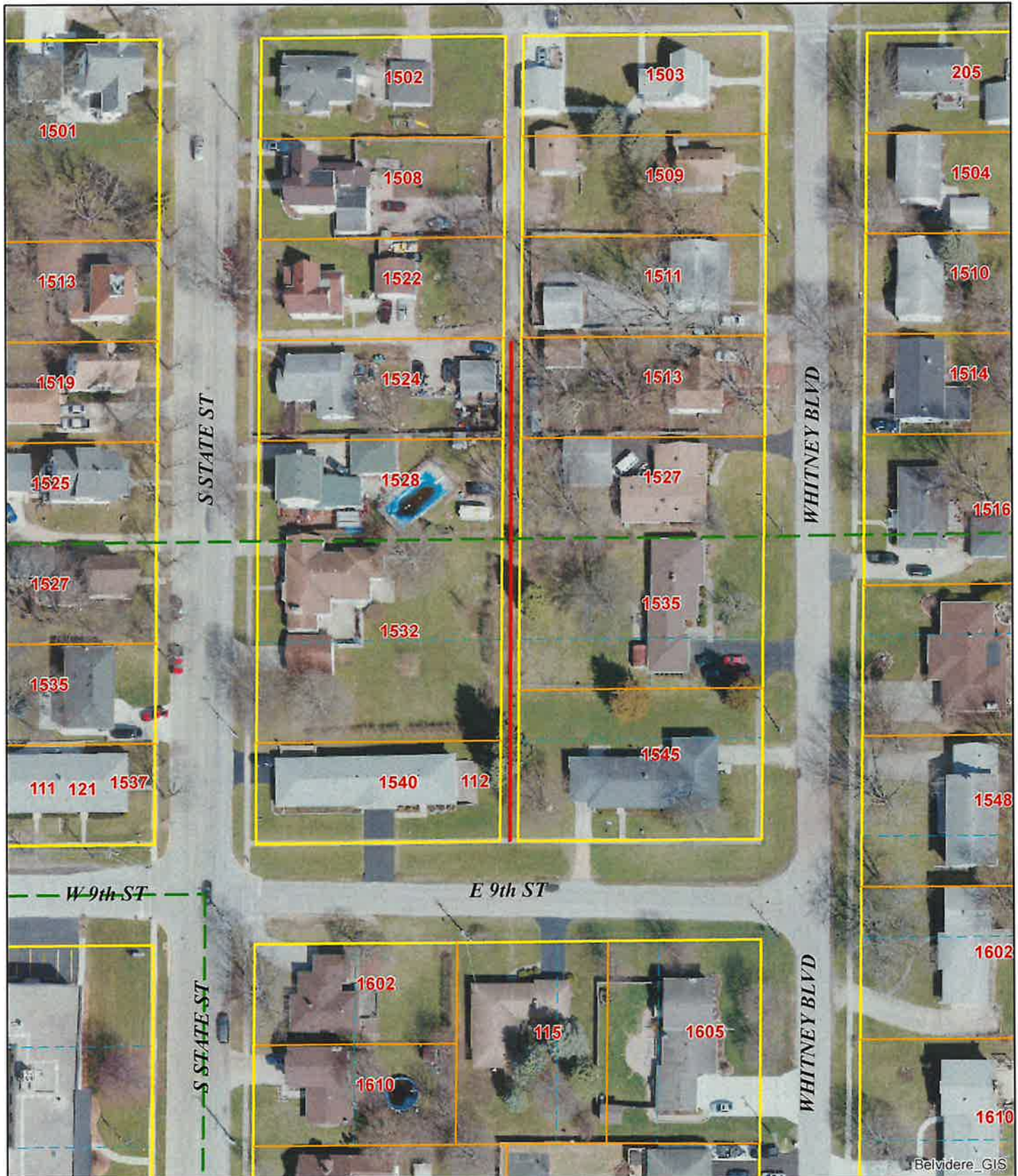
Recommended Action: Vacate, Contact Property Owners

Legend

- Remain ROW
- Vacate
- Non Improved Alley



Belvidere_GIS



Belvidere_GIS

SE8

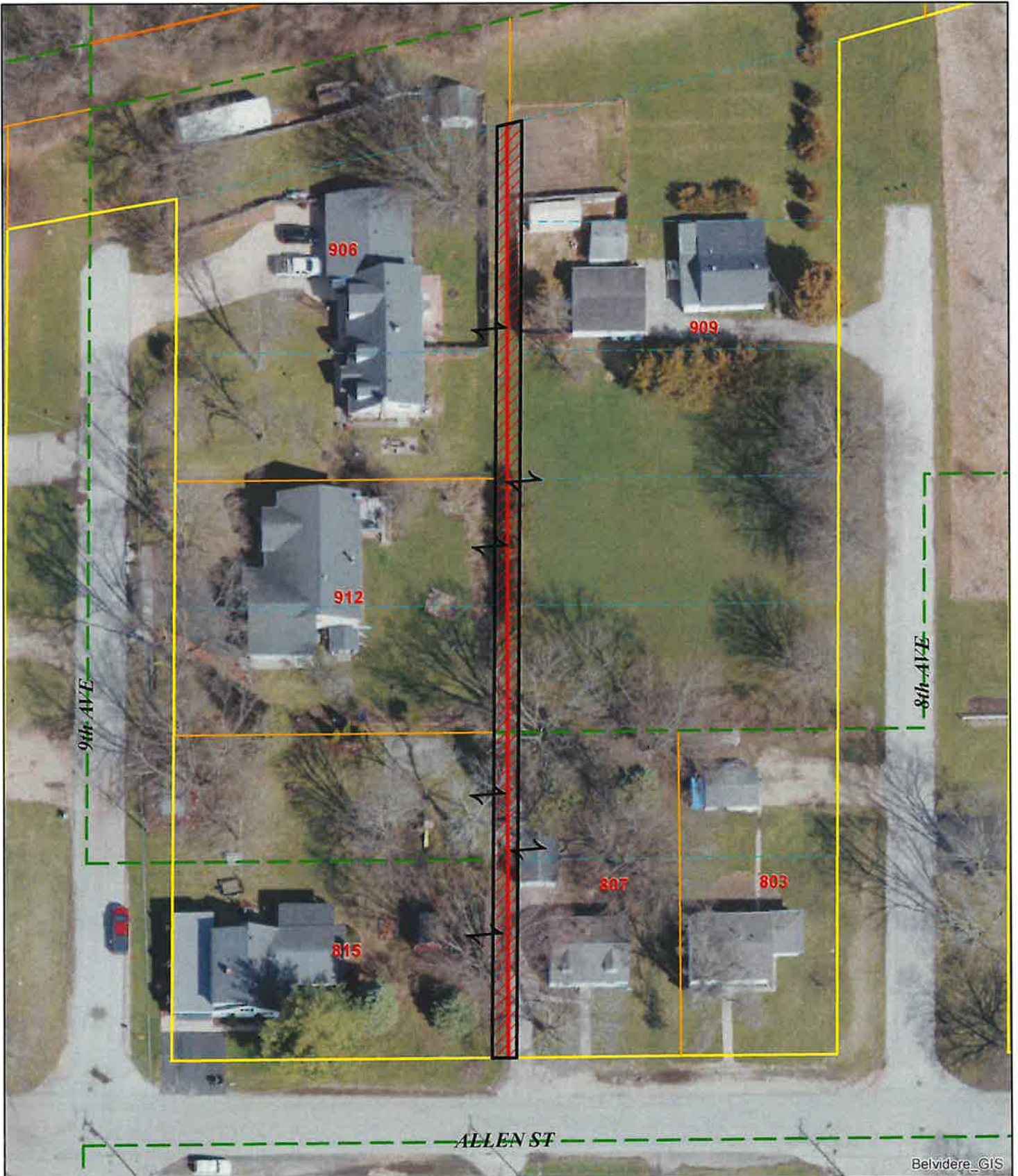
Length: 327
 Width: 12
 Alley Type: Partially Improved

Legend

- Remain ROW
- Vacate
- Non Improved Alley



Recommended Action: Extend Improvements to 9th St. (330 LF) - Estimated Cost \$7,920.00 (\$2,920 for Asphalt)



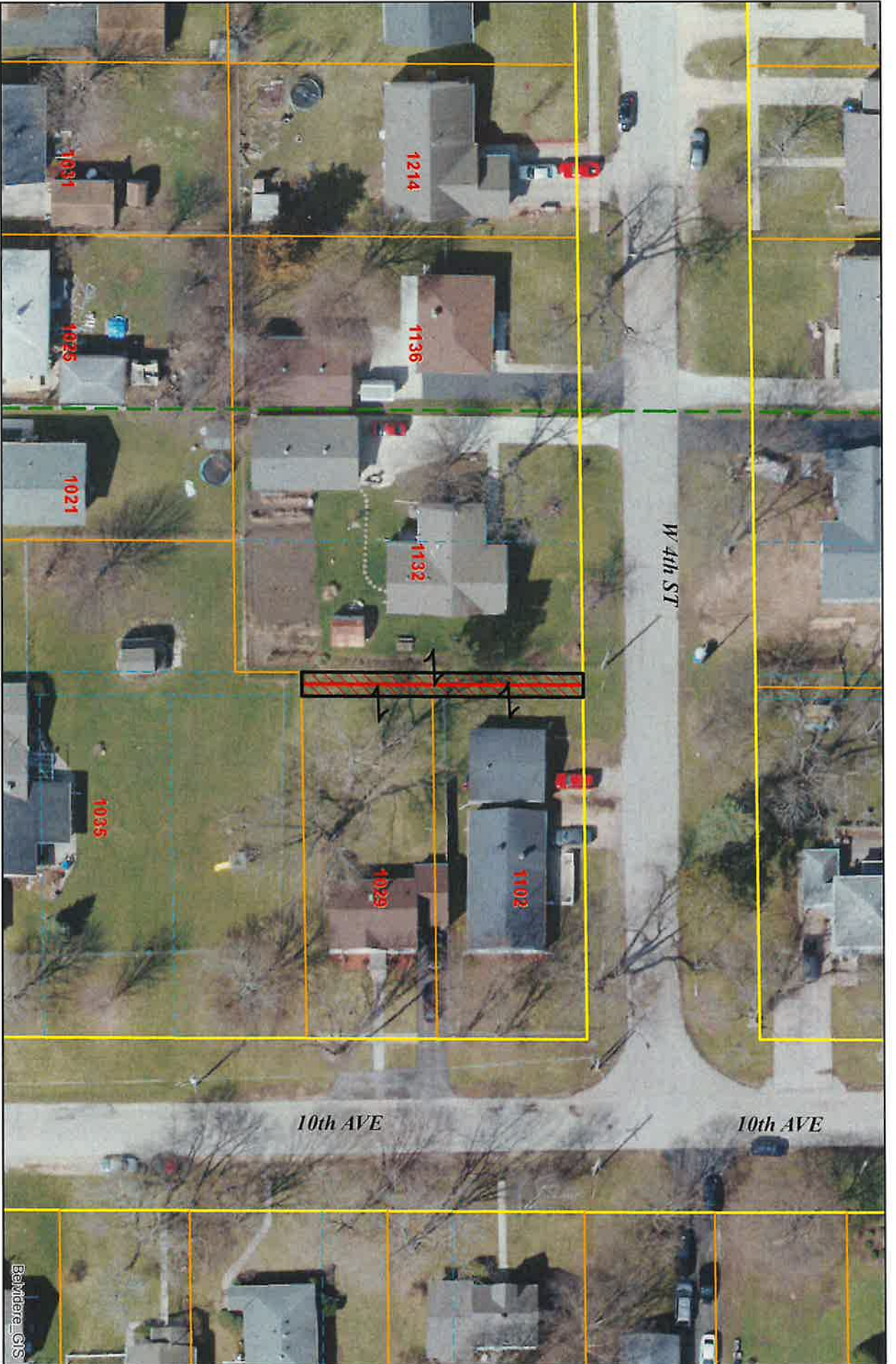
SW₁

Length: 367
 Width: 10
 Alley Type: Grass No Improvement
 Recommended Action: Vacate

Legend

-  Remain ROW
-  Vacate
-  Non Improved Alley





SW3

Length: 106

Width: 9

Alley Type: Grass No Improvement

Recommended Action: Vacate

Legend

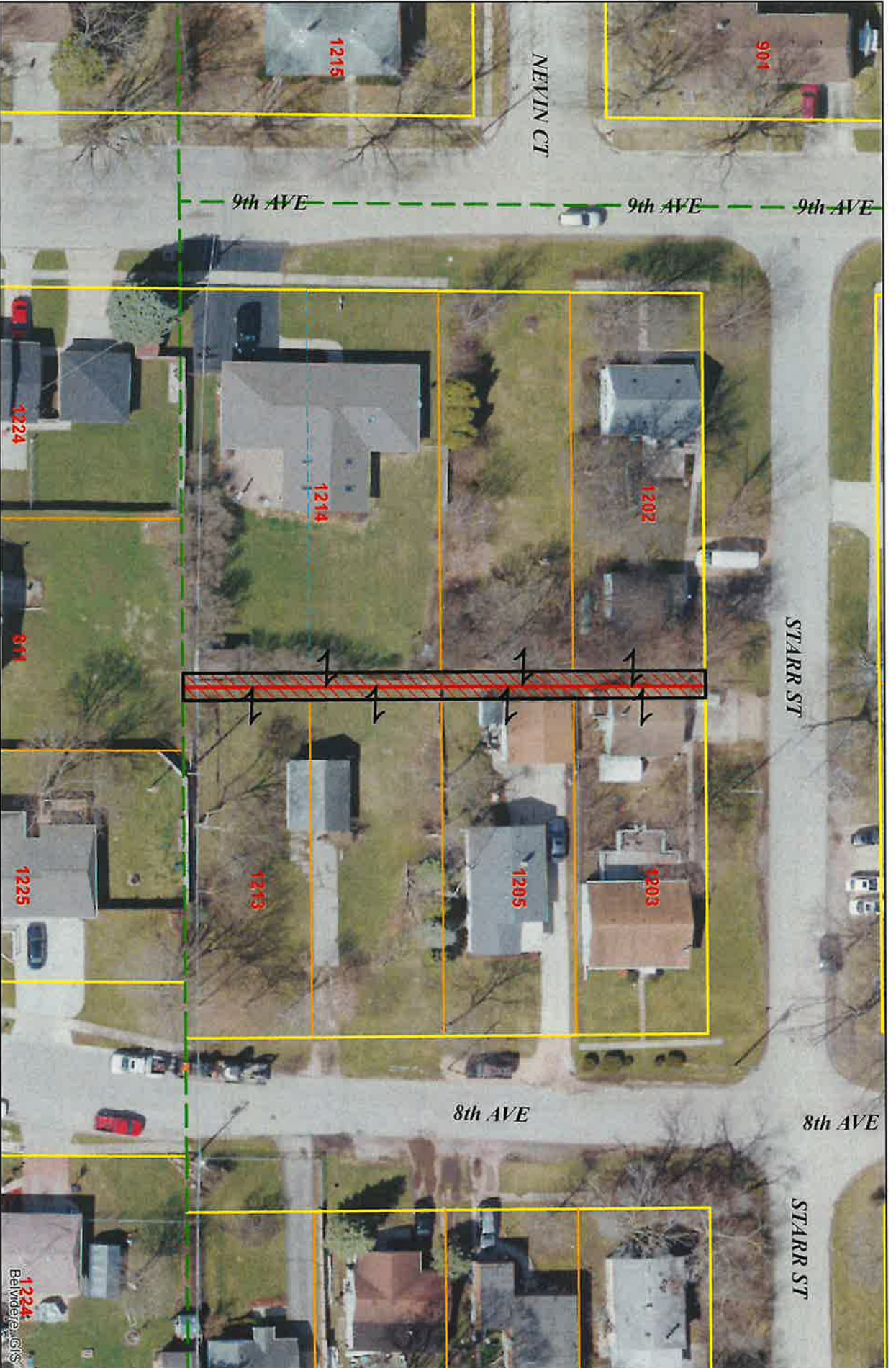
 Remain ROW

 Vacate

 Non Improved Alley



1 inch = 50 feet

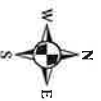


SW5

Length: 196
 Width: 10
 Alley Type: Grass No Improvement
 Recommended Action: Vacate

Legend

- Remain ROW
- Vacate
- Non Improved Alley



1 inch = 50 feet




1224
Belvedere GIS



SW6

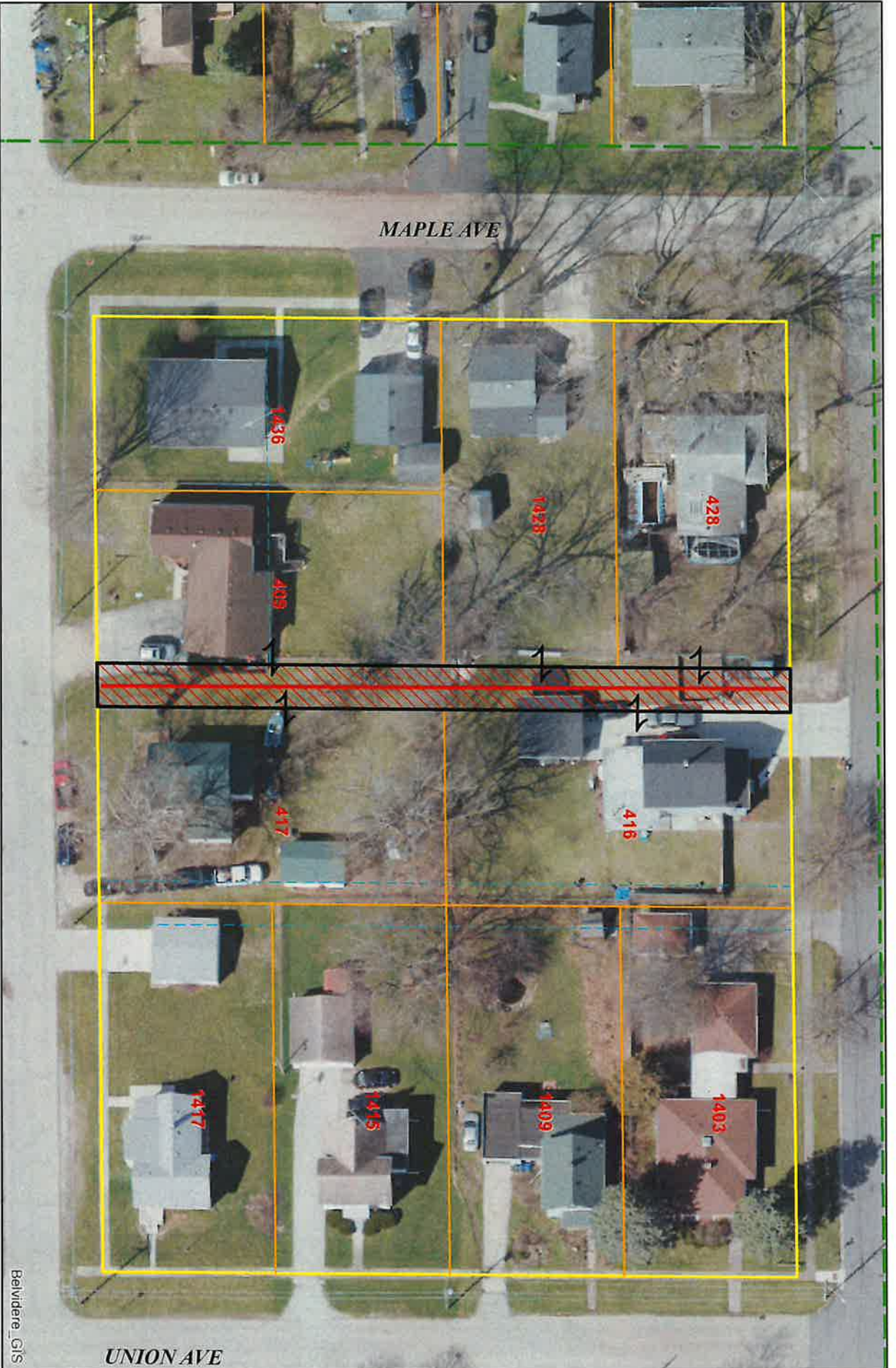
Length: 134
 Width: 16.5
 Alley Type: Grass No Improvement
 Recommended Action: Vacate

Legend

-  Remain ROW
-  Vacate
-  Non Improved Alley



1 inch = 50 feet



Belvidere_GIS

UNION AVE

MAPLE AVE

SW7


Length: 259

Width: 16.5

Alley Type: Partially Improved

Recommended Action: Vacate, Contact Property Owners

Legend

 Remain ROW

 Vacate

 Non Improved Alley



1 inch = 50 feet

MAPLE AVE

W 8th ST

W 9th ST

UNION AVE

W 8th ST

W 9th ST



SW8

Length: 263

Width: 16.5


Alley Type: Grass No Improvement

Recommended Action: Vacate

Legend

 Remain ROW

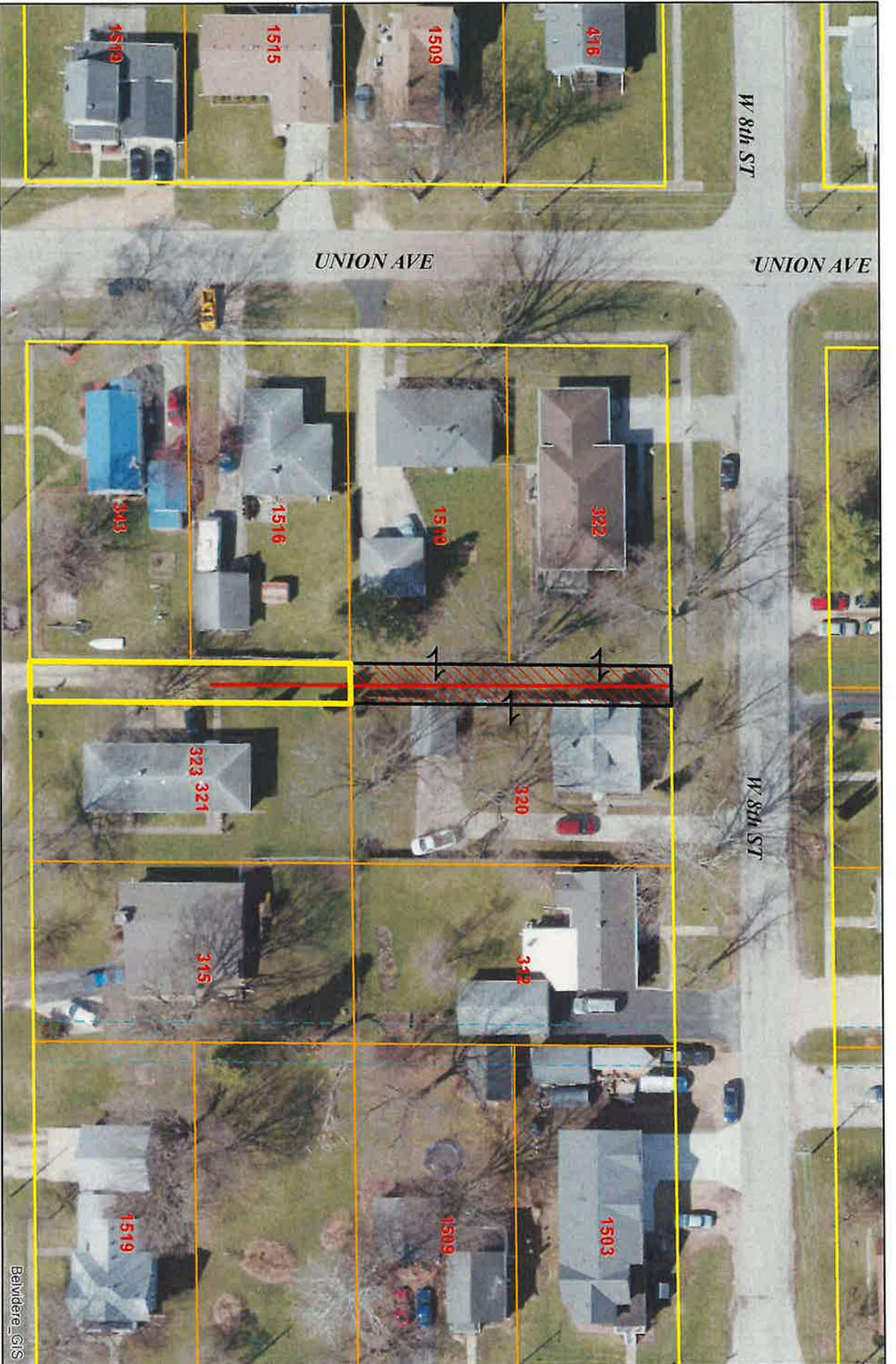
 Vacate

 Non Improved Alley



1 inch = 54.17 feet

BayWaide GIS



SW9

Length: 189

Width: 16.5

Alley Type: Partially Improved

Recommended Action: Vacate N 132', Contact Property Owners

Legend

Remain ROW

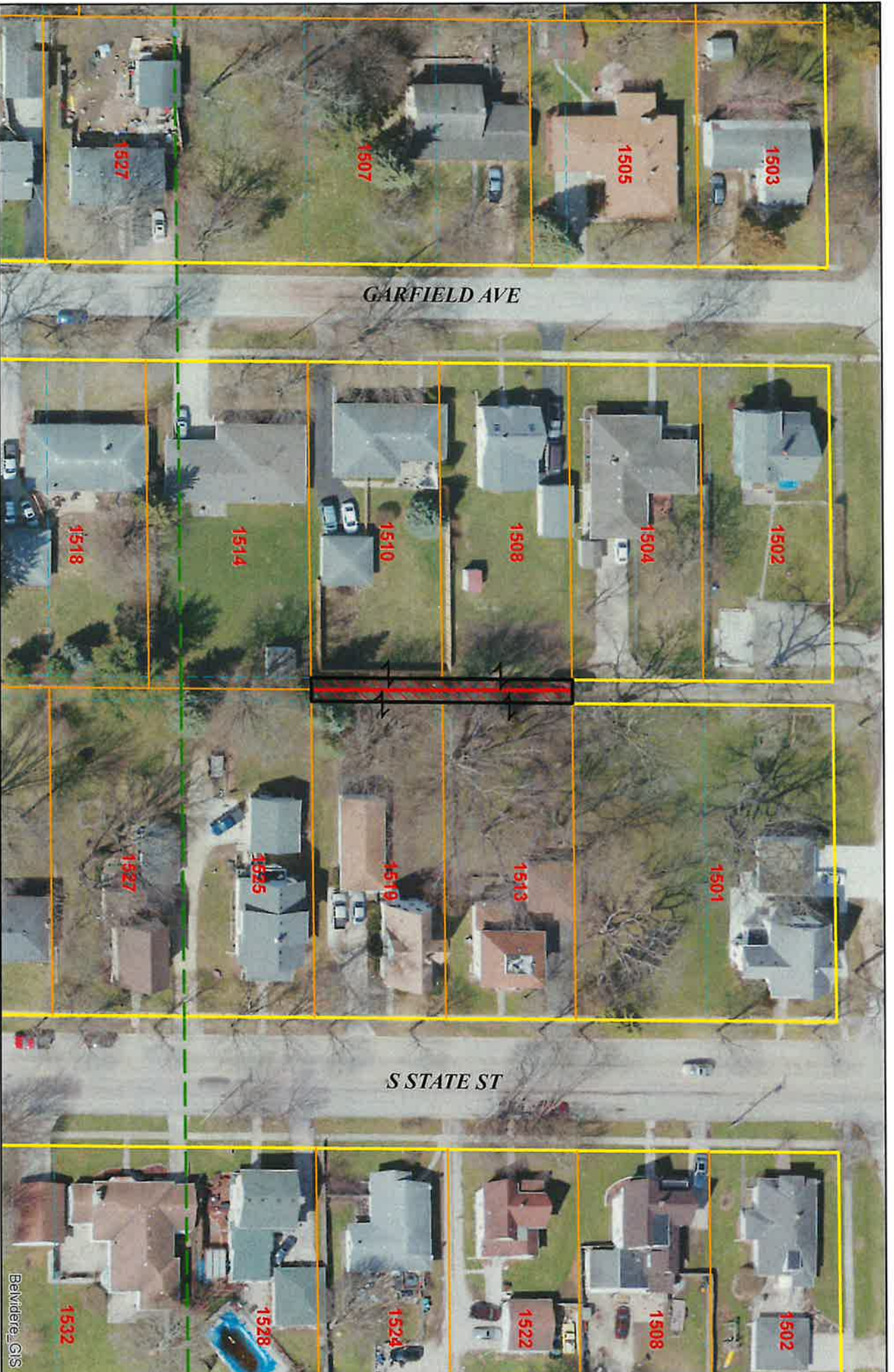
Vacate

Non Improved Alley



1 inch = 54.17 feet

Belvidere GIS



SW 11

Length: 132
 Width: 12
 Alley Type: Grass No Improvement
 Recommended Action: Vacate S 132'

Legend

- Remain ROW
- Vacate
- Non Improved Alley



1 inch = 66.67 feet

BeWilder_GIS

Memo

To: Aldermen and City Clerk
From: Mayor Clinton Morris
cc: City Attorney
Date: May 10, 2021
Re: Public Act 101-0640 / Determination that in person attendance is prudent.

On June 15, 2020, Mayor Chamberlain, in compliance with Public Act 101-0640, determined that in person attendance at City Council and Committee of the Whole meetings by the entire body of each entity was not prudent or practical.

With the release of the COVID-19 vaccines and the strides our region has made in combating the COVID-19 pandemic, it is now feasible to withdraw the June 15, 2020 determination. Effective June 7, 2021 meetings of the City of Belvidere Committees of the Whole and City Council shall be conducted by in person attendance only.

The Clerk shall file this determination with the City's records and make it a part of the minutes of this meeting.